

**HIGH MOUNTAIN HUNTS**  
**Joel Pat Latham, President**  
 806 Oak Shadows Court  
 Mansfield, Texas 76063  
[www.HighMountainHunts.com](http://www.HighMountainHunts.com)  
[Latham@HighMountainHunts.com](mailto:Latham@HighMountainHunts.com)  
 Cell: 817-371-4340

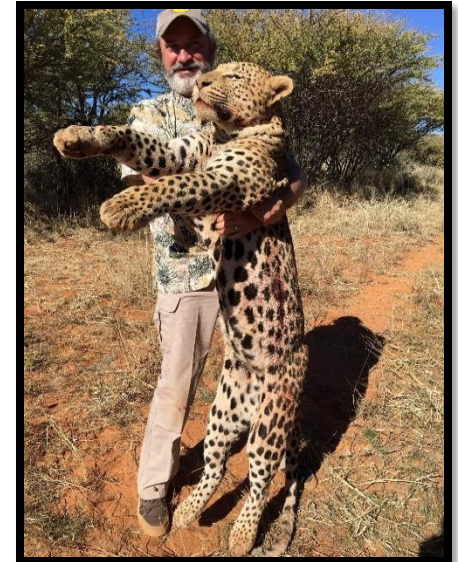
# HUNT NAMIBIA

a [Click for Additional Photos](#)

**Guaranteed Opportunity for a Leopard, Greater Kudu, Oryx, Eland, Waterbuck, Giraffe, Impala, Red Hartebeest, Burchell's Zebra, Black Wildebeest, Blue Wildebeest, Blesbok, Springbuck, Steenbok, Duiker and more in Namibia**

Namibia offers the ultimate free-ranging hunting experience where you can sleep in a new lodge that has five in-suite chalets overlooking a huge waterhole. These free-range areas are totally without any game proof fencing. Game can move freely and at will from property to property. These areas are all cattle and livestock ranches with low fences allowing game to jump over or go under. This is a true African Hunting Safari feeling. This concession is located 125 miles East of Windhoek in the Black

Nossob Conservancy which is 172,000 acres of privately-owned land. These privately-owned farms work together to protect the wildlife while still farming. Hunting is by driving around with a well-equipped 4x4 vehicle until game, or until signs of game is spotted. The game is then stalked on foot. This method allows all ages to enjoy a good hunt, as it doesn't require extreme fitness or health. Hot water, 220V power, telephone, mobile services, and daily laundry services are standard.



<u>Trophy Fees:</u>	
Greater Kudu	\$2,200
Oryx	\$ 720
Oryx over 40"	\$1,800
Eland	\$2,450
Waterbuck	\$2,200
Giraffe	\$2,400
Impala	\$ 850
Red Hartebeest	\$ 850
Burchell Zebra	\$1,550
Hartmann Zebra	\$1,600
Black Wildebeest	\$1,350
Blue Wildebeest	\$1,050
Blesbok	\$ 850
Springbuck	\$ 490
Steenbok	\$ 450
Duiker	\$ 450
Warthog	\$ 400
Baboon	\$ 150
Jackal	\$ 100
Caracal	\$1,500
Ostrich	\$ 450
Brown Hyena	\$3,300
Spotted Hyena	\$3,500
Klipspringer	\$1,800
Sable	\$7,000
Roan	\$8,000
Black Faced Impala	\$2,000
Damara Dik Dik	\$3,000
Black Springbuck	\$1,500
White Springbuck	\$1,500
Red Lechwe	\$2,900
White Blesbuck	\$1,600
Golden Oryx	\$3,400
Nyala	\$4,100
Tsetsabe	\$4,500



<u>Trophy Fees</u>	
White Rhino	P.O.R.
Buffalo	P.O.R.
Elephant	P.O.R.
Lion	P.O.R.

<u>Daily Rate</u>	
Hunter 1x1	\$490
Hunter 2x1	\$380
Hunter 2x1 x 2 (4)	\$350
Observer	\$190

<u>Hunted by Arrangement</u>	
Leopard	\$32,000
Cheetah	\$11,500
These hunts are separate	

**GUARANTEED OPPORTUNITY  
 LEOPARD HUNT  
 100% SUCCESSFUL IN THE PAST 13 YEAR**

High Mountain Hunts will hold your money until you have had an opportunity to take your Leopard. If you are unsuccessful, you may continue to hunt or return anytime during the season and pay only the daily rate.

### **Kalahari Package**

A 6-day hunt during which you can enjoy hunting some of the major plains game animals in Namibia. Our Kudu and Oryx are some of the best in Southern Africa!

- 1 Greater Kudu
- 1 Oryx
- 1 Red Hartebeest
- 1 Warthog
- 1 Springbuck

- 1 x 1 hunting = \$6,700
- 2 x 1 hunting = \$5,600 each hunter
- 2x1 x 2 persons = \$4,900 each hunter

### **Namibian Plains Game Special ANNIVERSARY PACKAGE**

This package celebrates 10 years since we started offering First Class hunts in Africa. We are very proud of our Establishment and this package represents unique animals and our unique area allow us to track these Big Antelope by foot and get the true experience.

- 1 Eland or Greater Kudu
- 1 Zebra
- 1 Blue Wildebeest
- 1 Warthog

- 1 x 1 Hunting = \$5,800
- 2 x 1 Hunting = \$5,200



Arrival and departure days will be charged as a normal hunting day if you arrive before noon and depart in the morning. A minimum of 6 hunting days for plain game will be charged as a standard. Prices are subjected to change due to possible currency fluctuations. The lodge consists of a big entertainment area with a bar, swimming pool and barbeque. The accommodations include four big chalets each sleeping 2 persons with in-suite bathrooms and another family chalet that can accommodate 4 sharing a small kitchen and separate shower and toilet facilities, all conventional necessities. We can easily accommodate 12 clients. Also available for those who want to experience nature on your doorstep, wake-up refreshed in the morning and watch as oryx, hartebeest and warthogs graze around your 6 luxury tents at night. Tents each sleeping two persons and have their own full electricity, warm water, heaters and comforters and all conventional necessities. Nature is brought to you. This is an experience you will not get in a bungalow. Sit around a cozy fire at night and gaze at the endless stars, forget about the world and just enjoy a stress-free time. The accommodation includes three meals a day, daily laundry, cellphone reception and internet services. The outfitter and guides take Saturdays off to work on equipment and process hides; however, the lodge is still open on those days. You will not be charged for Saturdays.



**For Tourist Travel Info and Day Activities for the Family,  
See Attached Information Below.**





**Price Includes:** Service of a licensed hunting guide, tracker and skinner, hunting vehicle and support team, field preparation of trophies, delivery of trophies to a local taxidermist or shipping agent, 15% VAT included in all prices, transportation from International Airport in Windhoek, Namibia to lodge and back, full accommodation with catering and laundry service. Visas: Bearers of U.S. passports who plan to visit Namibia for tourism or informal business meetings for less than 90 days may obtain visas at the port of entry free of charge.

**Price Excludes:** Cost per animal hunted and fees for animals wounded and lost, rifle rental @ US\$ 25 per day (any damages to the rifle or accessories will be charged to the client's account at replacement cost) ammunition charged extra and is charged by the box once opened, all alcoholic beverages, gratuities to the staff,

preparation, packing, documentation and export of trophies from Namibia by taxidermist, transfers to other hunting areas or tourist attractions, any air travel (including charter), pre- and post- safari accommodation and meals, all other items of a personal nature, insurance, special food, cost of medications, immunizations, hospitalizations and services of doctors, charges for evacuation or rescue by ambulance, helicopter or airplane and any other service or product that is not agreed or mentioned in this document.

**Terms and Conditions:** A deposit (50% of the daily rate) is required to confirm booking. The deposit will be forfeited should the booking be cancelled less than six months in advance. The balance is payable upon completion of the hunt in cash. No refunds for late arrivals or early departures. All animals taken or wounded will be charged for. Firearms and ammunition can be rented. Travel insurance is the responsibility of the Client himself. You must also read, understand and accept by signing the Terms and Conditions, Release of Liability and the Hunting Contract. Upon entry into the U.S. with a trophy, present to authorities your completed USFW Form 3-177.

**How to get there:** Fly non-stop from Frankfurt (FRA) to Windhoek, Namibia (WDH) on Air Namibia. Namibia is located in the southwest of Africa bordering South Africa, Botswana, Zambia, Zimbabwe and the Atlantic Ocean. Namibia is reported to be the safest country on the African Continent. Popular tourist attractions are Etosha National Park, Swakopmund, Sossusvlei, the Caprivi Strip and the Namib Desert (where Namibia derives its name).

**Namibia Climate:** Namibia's climate is typical of semi-desert terrain, hot days and cool nights. With 300 days of sunshine on average per year, Namibia is truly a sunny place. Only during the summer months from November to February does rain occur, mostly as heavy thunderstorms. The interior enjoys two rainy seasons: the short season is between October and December, marked by frequent thunderstorms. Summer is from October to April. Temperatures can reach 100+°F which plummets at night to cool levels. Average daily temperatures range from 68°F to 90°F. Winter is from May to September with wonderful warm days which are contrasted by very cold nights, when temperatures often drop to below freezing.

**MISC:** Import permits for firearms and ammunition (up to 60 rounds) are available at the airport in Windhoek.



Please note: only ammunition specific to the firearm may be imported. Handguns and automatic rifles are prohibited. We recommend a comprehensive travel, medical and accident insurance, as well as a baggage insurance which should also cover your rifle. We cannot be held reliable for possible losses, injuries, damages, accidents, and delays.

We recommend **RIPCORD** for your Rescue Travel Insurance. They provide a one-stop integrated travel protection program for adventurers and 24/7 contact with medical and security professionals. They are a medical and travel security risk company that provides worldwide evacuation and rescue services from your point of emergency all the way home. [www.ripcordrescuetravelinsurance.com/portal/highmtnhunts](http://www.ripcordrescuetravelinsurance.com/portal/highmtnhunts)

We recommend **TRAVEL WITH GUNS**, travel agency, out of San Antonio, Texas. Call Steve Turner at (210) 858-9833. His staff knows each airline and every detail of international regulations when it comes to transporting guns to a hunting destination.

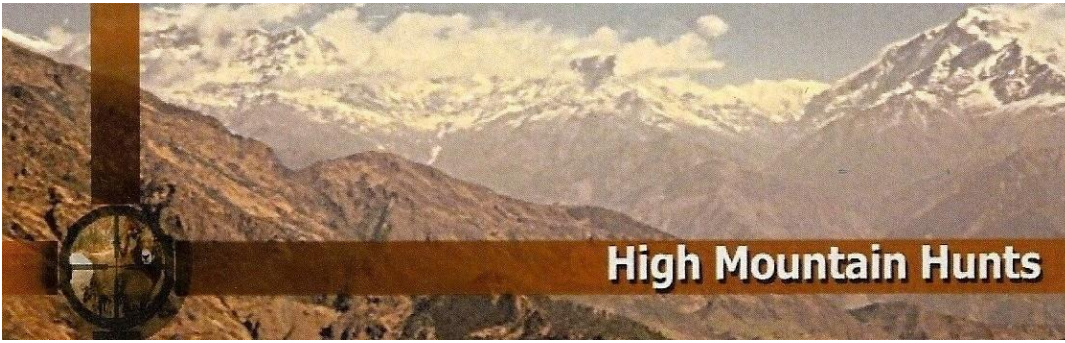
We recommend that you either buy or rent an **Explorer Satellite Telephone**. These telephones offer you unparalleled satellite phone service providing every mobile satellite customer with tailor-made satellite solutions via the Inmarsat, Iridium, Globstar and Thuraya satellite.

<http://www.explorersatellite.com>









**HIGH MOUNTAIN HUNTS**  
**Joel Pat Latham, President**  
 806 Oak Shadows Court  
 Mansfield, Texas 76063  
[www.HighMountainHunts.com](http://www.HighMountainHunts.com)  
[Latham@HighMountainHunts.com](mailto:Latham@HighMountainHunts.com)  
 Cell: 817-371-4340

## NAMIBIA TRAVEL AND DAY ACTIVITIES FOR FAMILIES

a 2

### Day Rate

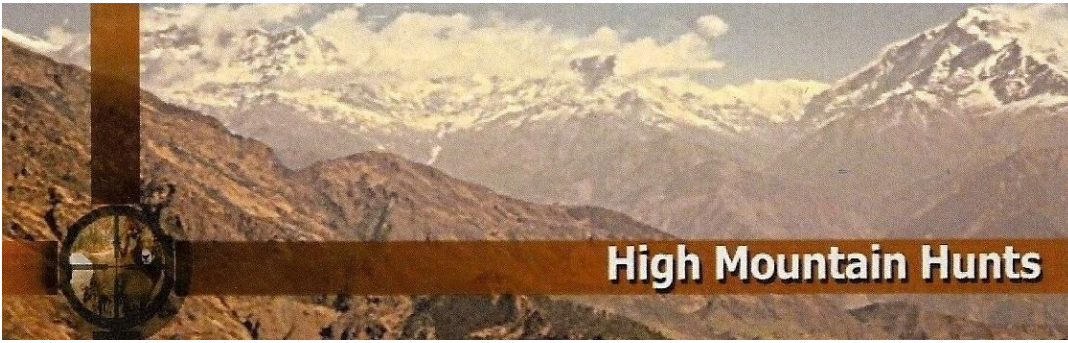
- 2 people      \$390 Per Person Per Day Sharing
- 3 people      \$360 Per Person Per Day Sharing
- 4 People      \$330 Per Person Per Day Sharing
- Price may vary depending on the season.

<u>Travel Destination</u>	<u>Basis</u>	<u>Description</u>
Windhoek	Bed & Breakfast	Capital of Namibia 30 min. drive from the Airport
Erindi Private Game Reserve	Full Board	Largest private game reserve in Namibia 70,000 hectares with most of the game species. Luxury accommodations
Swakopmund	Bed & Breakfast	Iconic coastal town with rich German history. Popular travel destination.
Sossusviei	Bed & Breakfast	Largest sand dunes in the world. One of Namibia's jewels. Popular destination.
Etosha National Park	Bed & Breakfast	Natl Park. Popular travel destination. Abundance of game and photographers' favorite spot

Included in Daily Rate: vehicle, fuel, travel guide, accommodation and meals specified in accommodation Basis

Not Included in Daily Rate: Personal travel and medical insurance, activities, drinks and alcoholic beverages, meals not specified in accommodation basis, tips.

We do cater for other travel destinations in Namibia. You are welcome to ask us for a custom travel package.



**HIGH MOUNTAIN HUNTS**  
**Joel Pat Latham, President**  
 806 Oak Shadows Court  
 Mansfield, Texas 76063  
[www.HighMountainHunts.com](http://www.HighMountainHunts.com)  
[Latham@HighMountainHunts.com](mailto:Latham@HighMountainHunts.com)  
 Cell: 817-371-4340

## NAMIBIA TRAVEL AND DAY ACTIVITIES FOR FAMILIES

a2

<u>Activity</u>	<u>Duration</u>	<u>Distance from Lodge</u>	<u>Included</u>	<u>Price Per Person Min 2</u>	<u>Price Per Person Min 3</u>	<u>Price Per Person 5 People</u>
<b>Harnas Wild Sanctuary</b>	3 hours	1 hour	Coffee, Water, Soft Drinks	\$140	\$120	\$100
Harnas is a wildlife sanctuary that homes a wide variety of predators that have been captured, endangered, or injured including Lions, Leopards, Cheetahs, Wild Dogs, Caracal and Baboons. It offers an excellent opportunity to experience these magnificent creatures up close while also supporting and contributing to their charitable endeavors						
<b>Guided Horse Ride</b>	2 hours	1/2 hour	Bottle of water	\$150	\$140	\$130
Experience the tranquility of Namibia from horseback on this guided ride, where you will encounter numerous game species and maybe even spot a Rhino						
<b>Bushmen Camp</b>	1 hour	1/2 hour	Bottle of water	\$120	\$110	\$100
Learn first-hand the native Bushman traditions and cultures on this activity and be transferred back in time as they demonstrate their hunting skills, tracking abilities, fire making techniques and traditional dances						
<b>Okambara Game Drive</b>	3 1/2	1 hour	coffee, cake & lunch	\$200	\$180	\$160
On this diverse 15,000-hectare land you will find Rhinos, Elephants, Roans, Sables and Giraffes together with an abundance of game species nestled between the beautiful mountains. Okambaa is the ideal location for the avid photographer to capture most of the game species without having to go the extra mile to a nature reserve						
<b>Sundowner Drive</b>	1 hour		Drinks & Snacks	\$50	\$50	\$50
Ideal for a peaceful, relaxing evening spent together. Namibia has some of the most spectacular sunsets combined with cold drink and snack, This is definitely an option to consider						
<b>Wendelstein Game Drive</b>	2 hours		Drinks & Snacks	\$100	\$100	\$100
A game drive around the lodge and surrounding ranches that is ideal for a late afternoon activity						
<b>Windhoek Day Visit</b>	As Long As Needed	Two & 1/2 hours	Bottle of Water	\$160	\$140	\$120
Experience the capital of Namibia, the traditional cuisine and architecture. Ideal for curio shopping						